



Conserving the Natural
Resources of Steuben County
for Future Generations!

The Conservator

Steuben County, Indiana Soil & Water Conservation District
1220 N 200 W, Suite L ~ Angola, IN 46703 ~ Phone: (260) 665-3211, ext. 3

VOLUME 42, ISSUE 2

SPRING 2019

INSIDE THIS ISSUE:

Farm Service 2
Agency Updates

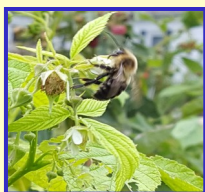
Invasive 3
Terrestrial
Plant Rule:
What You Need
to Know

2019 Affiliate 3
Members

Farm Safety 3
Field Day

Upcoming 4
Events

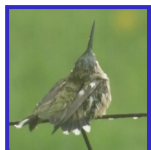
SWCD-NRCS 4
Conservation
Partnership
Directory



Bumble bees are key
pollinators of crops
and wildflowers.

Photos by Janel Meyer

Scan this symbol with your
smartphone to link to our website.



We Need Pollinators. Pollinators Need Us.

Somewhere between 75% and 95%¹ of all flowering plants on the earth need help with pollination—they need pollinators. Pollinators provide pollination services to over 180,000 different plant species and more than 1,200 crops¹. Did you know that 1 out of every 3 bites of food we eat NEEDS pollinators to exist? Without the hard work of pollinators, our plates would be bare! Pollinators do more for us than we realize. That's why it's important to keep bees, butterflies, bats, beetles, moths, birds and other critters around so they can continue providing food, beverages, medicine and fiber – all goods essential to our quality of life.

This year, National Pollinator Week will be celebrated from June 17—23, 2019. This week brings attention to the **valuable ecosystem services provided by pollinating species**. Unfortunately, pollinator populations are in decline, due to the loss of habitat and food sources.

So, how can we all help? The answer: **Conservation!!** Taking the right steps to create pollinator friendly habitat and healthy forage can help reverse their declines. If everyone — homeowners, farmers, local and national governments, private industry, etc. made an effort, we could very well change the future of pollinators.

There are many small things we can do to help, wherever you live. Below are some simple suggestions:

1. **Plant native plants for pollinators.** Habitat opportunities are available in every landscape, from window boxes to acres of land. Planting native plants (or at least non-

invasive plants) is critical to offer nectar sources for adult insects as well as a food source for other insect life stages. Remember to plant in clusters to create target areas for pollinators to find, and plant for a continuous bloom throughout the growing season from spring to fall. Visit the Xerces Society Pollinator Conservation Resource Center at <https://xerces.org/> for plant lists.

2. **Provide Habitat Year-Round.** Allow material from dead branches, standing stalks of dead plants, logs, and leaf litter to remain. Dead plants and litter serve as nesting and overwintering areas. Delay cleaning your gardens until temperatures are consistently over 50°F to avoid disturbing hibernating pollinators.
3. **Reduce or eliminate the impact of pesticides.** Unfortunately, pesticides affect more than just the pests you are trying to control. Beneficial insects and pollinators can be eliminated, as well. Planting native plants will draw beneficial insects, which are typically natural predators to the pests you are trying to control.
4. **Reach out to others and the Steuben SWCD!** Help us tell the story of pollinators! Also, If you are a Steuben County landowner located on or within 1/2-mile of a river, lakeshore or perennial stream in an urban, residential area— **GRANT FUNDING may be AVAILABLE** to assist with **NATIVE PLANTINGS** (i.e., pollinator plantings), **RAIN GARDEN** and **FILTER/BUFFER STRIP** installation, and **TREE/SHRUB** plantings. Contact us at (260) 665-3211, ext. 3, to see if you qualify.

¹www.pollinator.org/pollinators

Farm Service Agency Updates *Please call the office, (260-665-3211, ext. 2) for more details.*

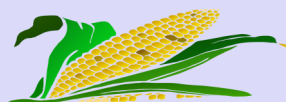
1. **2019 Crop Certification:** The deadline to report spring-planted 2019 crops is **July 15, 2019**. We hope you are able to get your crops planted, but with the spring weather, please see the next two items' deadlines.
2. **Prevented Planting:** The final date to submit a claim for prevented planted corn is June 20; prevented planted soybeans is July 5.
3. **Failed Acreage:** Report failed acreage **before the disposition** of the crop. The crop must have been planted under normal conditions, but failed because of a natural disaster, and not a management decision.
4. **New 2018 Farm Bill programs are beginning:**
 - **2019 Organic Certification Cost Share Program (OCCSP)** is available. Organic producers and handlers can apply for federal funds to assist with the cost of receiving and maintaining organic certification. Please contact us if you would like to apply for reimbursement of costs up to \$750 per scope. Applications are due October 31st.
 - **Continuous Conservation Reserve Program (CRP)** sign-up will begin June 3, 2019. This year's sign-up will include such practices as grassed waterways, filter strips, riparian buffers, wetland restoration and others. Continuous sign-up enrollment contracts are 10 to 15 years in duration. Soil rental rates will be set at 90 percent of the existing rates. Incentive payments will not be offered for these contracts. Please contact us if you would like to make an offer.
 - FSA will open sign-up for the new **Dairy Margin Coverage Program (DMC)** beginning June 17th. A decision tool to assist producers with calculating total premiums costs and administrative fees associated with participation in DMC has been developed. It also forecasts payments that will be made during the coverage year. For more information, access the tool at fsa.usda.gov/dmc-tool.

Information on additional Farm Bill Programs will be made available as they open.

5. **Payment Eligibility:** Please make sure to update your eligibility when you are in the office. Adjusted Gross Income Forms (AGI's) need completed yearly. Any farming changes, such as adding or dropping a farm, or adjusting acreage will change your farm plan, and the plan will need updated and signed. If you have any fields requiring a wetland or Highly Erodible determination, a new AD-1026 will need completed. Please make sure to report these changes.
6. All **CRP mid-management maintenance activities**, such as mowing, burning, disking and spraying, must be conducted outside the primary nesting or brood rearing season for wildlife, which for Indiana is April 1 through August 1 each year for contracts which started in 2008. If your contract was approved prior to 2008, then the primary nesting season is March 1 through July 15. However, spot treatment of noxious weeds (e.g. Thistle) that would adversely impact the approved cover may be permitted. Spot treatment is limited to the affected areas in the field, **and requires County Committee approval prior to beginning the spot treatment**. The County Committee will consult with NRCS to determine if such activities are needed to maintain the approved cover. **Annual mowing of CRP for generic weed control, or for cosmetic purposes, is always prohibited.**

If you have mid-management activities to perform on your CRP acreage this year, please make sure you turn in your bills, so you can get reimbursed for your costs. Once again, do not perform management activities between April 1st and August 1st.

7. **Dairy Premium Repayment:** If you were enrolled in the 2014-2017 Margin Protection Program for Dairy, you may be eligible for a partial refund of the premiums you paid. See us through September 20th for details on how to get your refund.
8. **Nomination forms to run for the FSA County Committee will be available June 15th.** We will be electing a representative for LAA 2, which includes the townships of Jackson, Pleasant, Scott, and York in Steuben County. Stop into our office to pick up a form, and make your voice heard!!



Invasive Terrestrial Plant Rule: What You Need to Know

The Terrestrial Plant Rule (312 IAC 18-3-25) designates 44 species of plants as invasive pests. The rule makes it **illegal to sell, gift, barter, exchange, distribute, transport or introduce these plants in the State of Indiana.**

Effective April 18, 2019, it is illegal to introduce plant species on the list not already found in Indiana. Species on the list that are already in the state will be prohibited for sale, trade, distribution, barter, gift, exchange, transportation or introduction in one year, April 18, 2020. This time allows nurseries to sell-down their stock. This component of the rule should minimize economic loss to nurseries that grow and/or sell the few commercially available species on the list.

What are invasive species? What damage do they cause?

An invasive species is defined as a species that is (1) non-native to the ecosystem under consideration and (2) whose introduction causes or is likely to cause economic or environmental harm or harm to human health.

Invasive species change their habitats by outcompeting native species for the resources necessary for survival. They degrade natural habitats, cause a loss of diversity and can have a negative effect on property values, agricultural yields, public utilities, recreation, and tourism.

List of prohibited invasive terrestrial plants includes:

- | | |
|--|--|
| <ol style="list-style-type: none"> 1) <i>Achyranthes japonica</i> (Japanese chaff flower) 2) <i>Ailanthus altissima</i> (tree of heaven) 3) <i>Alliaria petiolata</i> (garlic mustard) 4) <i>Alnus glutinosa</i> (black alder) 5) <i>Artemisia vulgaris</i> (mugwort) 6) <i>Arthraxon hispidus</i> (small carpetgrass) 7) <i>Berberis thunbergii</i> (Japanese barberry) 8) <i>Carduus acanthoides</i> (spiny plumeless thistle) 9) <i>Carduus nutans</i> (musk thistle) 10) <i>Celastrus orbiculatus</i> (Asian bittersweet) 11) <i>Centaurea stoebe</i> (spotted knapweed) 12) <i>Cirsium vulgare</i> (bull thistle) 13) <i>Conium maculatum</i> (poison hemlock) 14) <i>Convolvulus arvensis</i> (field bindweed) 15) <i>Coronilla varia</i> (crown vetch) 16) <i>Dioscorea polystachya</i> (<i>oppositifolia</i>) (Chinese yam) 17) <i>Dipsacus fullonum</i> (common teasel) 18) <i>Dipsacus laciniatus</i> (cut-leaved teasel) 19) <i>Elaeagnus umbellata</i> (autumn olive) 20) <i>Euonymus fortunei</i> (wintercreeper) 21) <i>Euphorbia esula</i> (leafy spurge) | <ol style="list-style-type: none"> 23) <i>Hesperis matronalis</i> (dame's rocket) 24) <i>Humulus japonicus</i> (Japanese hops) 25) <i>Lepidium latifolium</i> (pepperweed) 26) <i>Lespedeza cuneata</i> (sericea lespedeza) 27) <i>Ligustrum obtusifolium</i> (blunt-leaved privet) 28) <i>Lonicera japonica</i> (Japanese honeysuckle) 29) <i>Lonicera maackii</i> (Amur honeysuckle) 30) <i>Lonicera morrowii</i> (Morrow's honeysuckle) 31) <i>Lonicera x bella</i> (Bell's honeysuckle) 32) <i>Lonicera tatarica</i> (Tatarian honeysuckle) 33) <i>Microstegium vimineum</i> (Japanese stiltgrass) 34) <i>Morus alba</i> (white mulberry) 35) <i>Phalaris arundinacea</i> (reed canarygrass) 36) <i>Phellodendron amurense</i> (Amur cork tree) 37) <i>Phragmites australis</i> sub. <i>australis</i> (common reed) 38) <i>Polygonum perfoliatum</i> (mile-a-minute vine) 39) <i>Reynoutria japonica</i> (Japanese knotweed) 40) <i>Reynoutria sachalinensis</i> (giant knotweed) 41) <i>Reynoutria x bohemica</i> (Bohemian knotweed) 42) <i>Rhamnus cathartica</i> (common buckthorn) 43) <i>Vincetoxicum nigrum</i> (black swallow-wort) 44) <i>Vincetoxicum rossicum</i> (pale swallow-wort) |
|--|--|

2019 Affiliate Members

- | | |
|--------------------------------------|------------------------------|
| Angola American Legion | Lake George Conservancy Inc. |
| Angola Seed & Supply, LLC | Lake James Association Inc. |
| Aquatic Enhancement & Survey, Inc. | Peter Mountz |
| Carper Farm Supply, Inc. | Sue A. Myers |
| City of Angola/Trine University MS4 | Sheets LP Gas, L.P. |
| Clear Lake Township Land Conservancy | Steuben County Lakes Council |
| Bill & Diana Clingan | Stroh Farm Supply |
| Daft Erosion Control LLC | John Williamson |
| Tom & Marilyn DeWeese | |
| Edon Farmers Co-Op | |
| Farm Credit Mid-America | |
| Franklin Paul Group LLC | |
| Hoham Feed & Seed | |
| Kevin Northup Excavating | |



PURDUE
UNIVERSITY

Extension
STEBEN COUNTY

Steuben County Soil & Water
Conservation District



FAMILY. FARM. FUTURE. PROTECT YOUR MOST PRECIOUS ASSETS

July 27, 2019
9am - 2pm
Carper Farm Supply, INC.
309 N. Grand Ave., Ashley, IN 46705

Free event featuring: live demonstration stations, hog roast, keynote speaker, on-site farm safety planning, and **much more.**

For additional details, contact:

Purdue Extension- Steuben County (260)668-1000 ext. 1400
Steuben County Soil and Water (260)665-3211 ext. 3
Carper Farm Supply, Inc. (260) 587-3411



Purdue University Cooperative Extension Service is an equal access/equal opportunity institution.



Steuben County Soil & Water Conservation District

Peachtree Plaza 200
1220 N 200 W, STE L

Angola, IN 46703

260-665-3211, ext. 3

www.steubenswcd.org



facebook.com/SteubenIndianaSWCD

Conserving the Natural Resources of
Steuben County for Future Generations!

Please help us **go green** by subscribing to the newsletter via **e-mail**. Visit our website and click on the Newsletter tab, or call the office to change your subscription to *The Conservator* at any time.

All programs and activities of the Steuben County Soil and Water Conservation District and its Partnership Agencies are offered on a non-discriminatory basis, without regard to race, color, national origin, age, disability, and where applicable, sex, marital status, familial status, parental status, religion, sexual orientation, genetic information, political beliefs, reprisal, or because all or part of an individual's income is derived from any public assistance program.

Upcoming Events

June 12 th	Steuben SWCD Board Meeting 5:00 PM @ USDA Service Center
June 18 th	Conservation Camp—LaGrange County 9-2:30 PM @ Par Gil Learning Center
July 4 th	County Offices Closed Independence Day Holiday
July 6 th	Steuben County Lakes Council Meeting 8:30 AM at the First Congregational United Church of Christ in Angola, IN
July 9 th	Conservation Camp—Steuben County 9-2:30 PM @ Pokagon State Park
July 10 th	Steuben SWCD Board Meeting 5:00 PM @ USDA Service Center
July 16 th	Agronomy Field Day 7:15-3:00 PM @ The Anderson's Waterloo Ag Center
July 19 - 25 th	Steuben County 4-H Fair Crooked Lake, Angola, IN
July 27 th	Farm Safety Field Day 9-2:00 PM @ Carper Farm Supply, Ashley, IN
August 6 th	Conservation Camp—Whitley County 9:00-2:30 PM @ Columbia City, IN

***For more events and updates please check our website**
Times and places of meetings subject to change.*

SWCD - NRCS CONSERVATION PARTNERSHIP DIRECTORY

Board of Supervisors:

Craig Holman, Chairman Chuck Howard, Vice Chairman
Gene Diehl Kayleen Hart David Perkins

Associate Supervisors:

Timothy Groosbeck Daniel Oberst

SWCD Staff:

Janel Meyer Tara Lee
Administrative Coordinator Resource Conservationist

NRCS Staff:

Jennifer Walker, Acting District Conservationist
Arthur Franke, Soil Conservationist